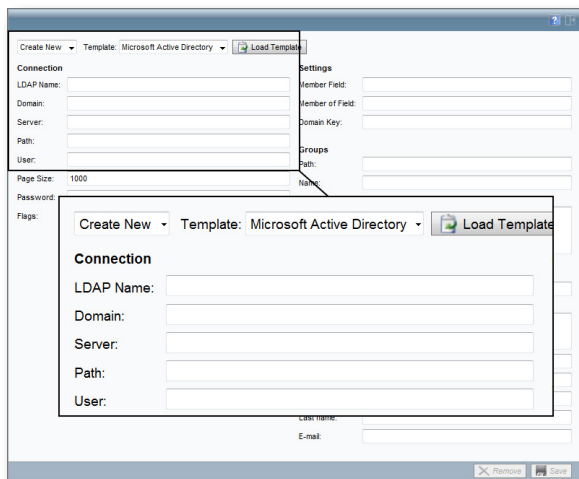


SR-LDAP

The plug-in SR-LDAP facilitates the user administration by, amongst other, simplifying the password administration and making it possible to pre-define language codes for users. You import both respondents and users from a directory service. That way the information is always updated and you can create a "single sign-on" environment within the survey tool.



SR-LDAP allows you to import respondents and users from a directory service, like Active Directory, for example.

Synchronize passwords

In the LDAP settings you can, amongst others, decide which LDAP sources that is to be used, and whether passwords should be synchronized at import. You also define if it is supposed to be possible to log in to Survey&Report even if the user verification is not available.

SR-SSL

With the plug-in SR-SSL you get the possibility to demand that those who connect to the program do it via a so called https-connection. When a https-connection is used the transmission between the web server and the web browser is encrypted by the SSL technique (Security Sockets Layer).

Raising the security might be a good idea if your surveys contain confidential or sensitive information. The setting can be made for both the administrative interface, as well as for the public web site where the respondents answer the survey.

Please note that the https-connection demands that the web server where the program is installed have a certificate for the address of the domain. If you have the program installed on your own web server and want to make the https-connection possible, you need to get a certificate from an authorized issuer. If you are a SaaS customer this is something you do not have to do, since Artisan's server provide this for you.

Simplify management

With the plug-in SR-LDAP it is possible to connect the user and the survey respondent data base with a user catalogue which supports LDAP, like Active Directory for instance. This allows you to import new users straight from the user catalogue. All personal information is then automatically updated through regular updates. This removes double administration and simplifies the handling and validation.

Language codes

At the import you can choose to let the program do it according to the standard settings and import the users as they are, or create different import rules. You can, for example, divide respondents into categories as they are imported, or why not give them different language codes? One import rule could be "Everyone with United Kingdom in their address receives the language code English".

The rules can be varied and finely tuned. When you are done with the settings you can log in to the application just as usual and finish the import.